

# Fees list: Standard - Euro

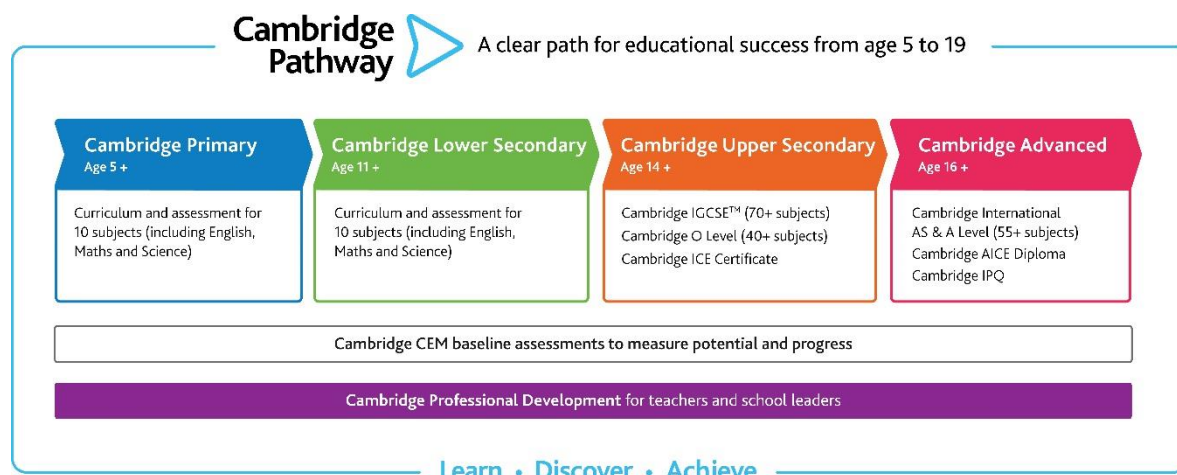
October 2022 to September 2023

## Introduction

This fees list includes:

- Application fees.
- Cambridge Pathway:
  - Cambridge Primary.
  - Cambridge Lower Secondary.
  - Cambridge Upper Secondary.
  - Cambridge Advanced.
- Cambridge Professional Development Qualifications.
- Administration fees.
- Learner registration fees for online schools.

In this fees list, we refer to 'Cambridge schools'. These are schools, colleges or any other organisation registered to offer our programmes and qualifications. Our registration year runs from 1 October to 30 September each year.



## If you have any questions

Contact us at [info@cambridgeinternational.org](mailto:info@cambridgeinternational.org). Our Customer Services team is available 24 hours a day, six days a week. Our hours are Sunday 00:01 UTC to Friday 23:59 UTC, all year round. We are closed on Saturdays 00:01 UTC to 23:59 UTC. For help, go to [www.cambridgeinternational.org/help](http://www.cambridgeinternational.org/help)

## Registering as a Cambridge school

### Application fee

Before your school can offer our programmes and qualifications, we will ask you to complete our application process. This includes an approval visit, where a Cambridge International representative will visit your school to understand your plans and help you to register. There is an application fee to cover this process which may be conducted remotely or in-person.

We will refund a proportion of the fee (€ 865.00) if your school does not meet our standards for registration. We retain the remainder of the fee to cover the cost of your school approval visit.

Where it is deemed necessary to conduct a visit in order to assess a school's ability to extend the programmes they offer or a school is extending to offer our programmes online, a programme extension application fee will apply.

	<b>EURO (€)</b>
Application fee.....	2,590.00
Programme extension application fee .....	1,295.00

### Programme fees – what's included (subject to successful application)

	Cambridge Primary programme fee	Cambridge Lower Secondary programme fee	Cambridge Upper Secondary & Advanced programme fee	Cambridge Professional Development Qualifications programme fee
Cambridge Primary	•	•		
Cambridge ICT Starters	•	•	•	
Cambridge Lower Secondary	•	•	•	
Cambridge Upper Secondary			•	
Cambridge Advanced			•	
Cambridge PDQ	•	•	•	•

### Cambridge Primary and Cambridge Lower Secondary programme fees

Following a successful school approval visit, schools pay a yearly programme fee. The school registration year runs from 1 October to 30 September. See page 4 for candidate entry fees for Cambridge Primary Checkpoint and Cambridge Lower Secondary Checkpoint.

	<b>EURO (€)</b>
Schools renewing their registration from the previous year, or schools registering for the first time before 31 Dec 2022 .....	3,760.00
Schools registering for the first time part way through the registration year:	
from 1 Jan 2023 to 31 Mar 2023.....	2,820.00
from 1 Apr 2023 to 30 Jun 2023 .....	1,880.00
from 1 Jul 2023 to 30 Sep 2023.....	940.00

## Cambridge Upper Secondary and Advanced programme fee

Following a successful approval visit, schools pay a yearly Cambridge Upper Secondary and Advanced programme fee. The school registration year runs from 1 October to 30 September. See page 5 for candidate entry fees.

	EURO (€)
Schools renewing their registration from the previous year, or schools registering for the first time before 31 Dec 2022.....	7,565.00
Schools registering for the first time part way through the registration year:	
from 1 Jan 2023 to 31 Mar 2023 .....	5,675.00
from 1 Apr 2023 to 30 Jun 2023.....	3,785.00
from 1 Jul 2023 to 30 Sep 2023.....	1,895.00

You will not be charged the yearly Cambridge Upper Secondary and Advanced programme fee for 2023/24 if your annual spend is over €13,110.00 in the year from October 2022 to September 2023.

The application fee and the Cambridge Upper Secondary and Advanced programme fee do not count towards the €13,110.00 total.

What counts towards your annual spend	
Cambridge Primary and Cambridge Lower Secondary programme fee	Cambridge Professional Development Qualification fees
Qualification entry fees <sup>1</sup>	Cambridge Professional Development training courses
Cambridge AICE Diploma and Cambridge ICE entry fees	Results services
Publications catalogue purchases	Post-results services <sup>2</sup>

Please note that the following do not count towards your annual spend:

- Cambridge CEM products and services,
- Cambridge Assessment Network events,
- CPSQ products,
- Learner registration fees for online schools.

If we add any new services, these will count towards your annual spend, unless stated otherwise.

## Learner registration fees for online schools

Cambridge schools registered as online or approved to offer Cambridge Primary, Lower Secondary or Upper Secondary and Advanced programmes online must also pay a learner registration fee per student. We will invoice you for this fee based on the data you provide to us. If you do not provide this data by the date we specify, we will charge you an additional fee.

	EURO (€)
Schools renewing their registration from the previous year, or schools registering for the first time before 31 Dec 2022.....	35.15 per learner
Schools registering for the first time part way through the registration year:	
from 1 Jan 2023 to 31 Mar 2023 .....	26.36 per learner
from 1 Apr 2023 to 30 Jun 2023.....	17.58 per learner
from 1 Jul 2023 to 30 Sep 2023.....	8.79 per learner

<sup>1</sup> Late entry fees do not count towards your annual spend.

<sup>2</sup> Enquiries about results (EARs) and any subsequent appeals do not count towards your annual spend.

If you do not submit your learner numbers by the due date, we will charge a 30% increase on the learner registration fee (e.g.€ 45.70). The amount you must pay at this increased amount will be based on student numbers you submitted the previous year. We cannot make any adjustments to your invoice once we have issued it. If you do not submit your learner numbers for two years in a row, we may withdraw your centre status and terminate our Agreement with you.

## Cambridge Primary

Cambridge Primary schools paying the Cambridge Primary or Cambridge Lower Secondary programme fees (see page 2) can offer **Cambridge Primary Checkpoint** at the end of the Cambridge Primary stage. Cambridge Primary Checkpoint tests are available for English, English as a Second Language, Mathematics, Science and Global Perspectives.

Learn more at [www.cambridgeinternational.org/cambridgeprimary](http://www.cambridgeinternational.org/cambridgeprimary)

	EURO (€)
Cambridge Primary Checkpoint (per candidate, per subject) .....	22.35

## Cambridge Lower Secondary

**Cambridge Lower Secondary** schools paying the Cambridge Primary, Cambridge Lower Secondary or Cambridge Upper Secondary and Advanced programme fees can also offer **Cambridge Lower Secondary Checkpoint** tests at the end of the Cambridge Lower Secondary stage. Cambridge Lower Secondary Checkpoint tests are available for English, English as a Second Language, Mathematics, Science and Global Perspectives.

Learn more at [www.cambridgeinternational.org/lowersecondary](http://www.cambridgeinternational.org/lowersecondary)

	EURO (€)
Cambridge Lower Secondary Checkpoint (per candidate, per subject) .....	39.50

## Cambridge ICT Starters

Cambridge ICT Starters is available to Cambridge schools paying the Cambridge Primary, Cambridge Lower Secondary or Cambridge Upper Secondary and Advanced programme fee. It introduces learners, typically aged 5 to 14, to the key ICT applications they need to achieve computer literacy and to understand the impact of technology on our daily lives.

<b>Fees per candidate:</b>	<b>EURO (€)</b>	
Cambridge ICT Starters Initial Steps Stage 1 (3 modules) .....	38.70	per stage
Cambridge ICT Starters Initial Steps Stage 2 (3 modules) .....	38.70	per stage
Cambridge ICT Starters Initial Steps Full Award – Stage 1 & 2 (6 modules).....	77.40	full award
Cambridge ICT Starters Next Steps Stage 1 (4 modules) .....	55.80	per stage
Cambridge ICT Starters Next Steps Stage 2 (4 modules) .....	55.80	per stage
Cambridge ICT Starters Next Steps Full Award – Stage 1 & 2 (8 modules).....	111.60	full award
Cambridge ICT Starters On Track Stage 1 (4 modules) .....	55.80	per stage
Cambridge ICT Starters On Track Stage 2 (4 modules) .....	55.80	per stage
Cambridge ICT Starters On Track Full Award – Stage 1 & 2 (8 modules) .....	111.60	full award

## Cambridge Upper Secondary

**Cambridge Upper Secondary** is included in the Cambridge Upper Secondary and Advanced programme fee. Cambridge schools can offer a wide range of **Cambridge IGCSE** or **Cambridge O Level** subjects.

Learn more at [www.cambridgeinternational.org/uppersecondary](http://www.cambridgeinternational.org/uppersecondary)

<b>Fees per candidate:</b>	<b>EURO (€)</b>	
Cambridge IGCSE.....	98.05	per subject
Cambridge IGCSE Double Award.....	196.10	per subject
Cambridge ICE entry fee.....	72.30	per certificate
Cambridge O Level.....	98.05	per subject

## Cambridge Advanced

**Cambridge Advanced** is included in the Cambridge Upper Secondary and Advanced programme fee. Cambridge schools can offer a wide range of subjects for **Cambridge International A Level** (which can be studied as a staged assessment – Cambridge International AS Level & A Level components).

Learn more at [www.cambridgeinternational.org/cambridgeadvanced](http://www.cambridgeinternational.org/cambridgeadvanced)

<b>Fees per candidate:</b>	<b>EURO (€)</b>	
Cambridge International AS Level component or A2 Level component (except AS Global Perspectives).....	115.15	per subject
Cambridge International A Level (except A Level Global Perspectives).....	166.60	per subject
Cambridge IPQ.....	143.40	per subject
Cambridge AICE Diploma entry fee.....	121.50	per diploma
Cambridge AICE Full Credit (Cambridge International AS Level component and A Level component).....	115.15	per subject
Cambridge AICE Double Credit (Cambridge International A Level).....	166.60	per subject

### Cambridge International AS & A Level Global Perspectives and Research (GPR)

Learners develop research, thinking, reasoning and communication skills by following a structured approach to analysing and evaluating arguments and perspectives. The skills they gain help them to meet the demands of twenty-first century learning and to make a successful transition to higher education.

<b>Fees per candidate:</b>	<b>EURO (€)</b>	
Cambridge International AS Level component.....	185.20	
Cambridge International A2 Level Global Perspectives.....	143.40	
Cambridge International A Level Global Perspectives.....	233.00	

### Cambridge Pre-U Global Perspectives and Research (GPR)

<b>Fees per candidate:</b>	<b>EURO (€)</b>	
All Cambridge Pre-U Global Perspectives and Research components (1, 2, 3, 4).....	298.70	per subject
Cambridge Pre-U Global Perspectives components only (1, 2, 3).....	185.20	per subject
Research component only with Cambridge Pre-U Global Perspectives or Cambridge International AS Level Global Perspectives mark carried forward.....	185.20	per subject

## Cambridge Professional Development Qualifications and teacher training

**Cambridge Professional Development Qualifications** (Cambridge PDQs) are a system for practice-based professional learning, assessment and certification for teachers and leaders. With Cambridge PDQs you can embed continuous professional development in your school and transform teaching and leadership so that students learn better.

Schools and organisations interested in becoming a Cambridge Professional Development Centre, in order to run a Cambridge PDQ programme, need to complete the approval process.

Learn more at [www.cambridgeinternational.org/pdq](http://www.cambridgeinternational.org/pdq)

Registered Cambridge schools: access to Cambridge Professional Development Qualifications is included in the Cambridge Primary, Cambridge Lower Secondary, and the Cambridge Upper Secondary and Advanced programme fees following a successful approval application.

We charge a yearly Cambridge PDQ programme fee of €7,565.00 if a school is not already a registered Cambridge school paying a Cambridge Primary, Cambridge Lower Secondary or Cambridge Upper Secondary and Advanced programme fee.<sup>3</sup>

### Fees per candidate:

**Cambridge International Certificate or Diploma in Teaching & Learning**

**Cambridge International Certificate or Diploma in Teaching with Digital Technologies**

**Cambridge International Certificate or Diploma in Teaching Bilingual Learners**

**Cambridge International Certificate or Diploma in Educational Leadership**

	EURO (€)
<b>Certificate</b> (Module 1).....	284.50
<b>Diploma</b> (Module 2) .....	170.70
<b>Diploma</b> (Module 3) .....	113.80

### Fees for online Programme Leader courses

Cambridge PDQ Programme Leaders must complete the online Programme Leader Induction course.

	EURO (€)
Online Programme Leader Induction course.....	299.25
Online Programme Leader Extension course.....	164.60
Resubmission of the programme plan and rationale .....	80.80 per module

### Professional development training courses (subject and skills based)

We deliver a wide range of teacher training and professional development courses and programmes through:

- face to face training
- webinars
- online courses
- examiner feedback web conferences after each exam series
- dedicated tutor-led courses on a range of syllabuses
- self-study courses.

Learn more at [www.cambridgeinternational.org/professionaldevelopment](http://www.cambridgeinternational.org/professionaldevelopment)

Fees for teacher training depend on the type of delivery method and are available on request. Contact [info@cambridgeinternational.org](mailto:info@cambridgeinternational.org) for further information.

<sup>3</sup> Schools will not be charged the yearly PDQ programme fee for the following year if their annual spend is over €13,110.00 in this school year. The application fee and the Cambridge PDQ programme fee do not count towards the €13,110.00 total.

## Administration fees

After the final entry closing date, we will charge late fees for any new entries you make, as well as for any entry amendments or syllabus changes. Entries or changes received after the advertised deadlines can cause disruption to carefully scheduled processes and cause significant extra work. Late entry fees are therefore applied to recover the costs of additional processing requirements, and to encourage the submission of entries by the advertised closing dates.

	EURO (€)
Late entries .....	58.60 per entry, per subject
Very late entries .....	146.50 per entry, per subject

\* *Cambridge International may be unable to accept entry changes in the very late entries period if these are received too close to the exam. Please refer to the Cambridge Handbook for entry deadlines.*

\* *Late entry fees will be charged in addition to the normal syllabus fee.*

## Results service

	EURO (€)
Duplicate results – whole school.....	77.40
Duplicate results – broadsheet only .....	51.75
Duplicate results – additional fee for despatch by courier .....	67.20
Priority results information .....	74.30
Priority results information – additional fee for extra copy .....	20.70
Priority results information – additional fee for despatch by courier .....	67.20

## Post-results service

	EURO (€)
Certifying statement search fee .....	74.30
Certifying statement – additional fee for extra copy.....	20.70
Certifying statement – additional fee for despatch by courier .....	67.20
Certifying statement – additional fee for authentication per statement.....	264.20
Replacement certificate - name amendment requested after the issue of certificates .....	74.30
Replacement certificate - date of birth (DOB) amendment requested after the issue of certificates (accredited syllabuses only).....	74.30
Replacement certificate – additional fee for despatch by courier .....	67.20
Replacement statement of results (SoR) – name amendment requested after the issue of SoR .	74.30
Replacement statement of results – DOB amendment requested after the issue of SoR.....	74.30
Replacement statement of results – additional fee for despatch by courier .....	67.20
Verification of results .....	33.10
Recalculation of Cambridge ICE or the Cambridge AICE Diploma (non-refundable fee): For the first five candidates:.....	136.95
For each additional candidate: .....	13.80

## Enquiries about results (EARs)

Euro (€)

Service number	Description	Cambridge O Level / IGCSE	Cambridge International AS & A Level / Pre-U	Cambridge Professional Development	
		Component fee	Component Fee	Timetabled module	On-demand module
1	Clerical re-check	27.95	31.05	27.95	---
1S	Clerical re-check with a copy of the script	61.10	61.95	---	---
2	Review of marking and clerical re-check	65.10	77.40	65.10	65.10
2S	Review of marking and clerical re-check with a copy of the script	98.15	111.55	---	---
3	Review of marking and clerical re-check, with detailed report on assignment module	---			103.10
4	Review of marking for one assignment module and report on a group of candidates All candidates in the group must have taken the same combination of components For the first five candidates: For each additional candidate up to maximum 30:	---			453.80 83.05
5	Re-moderation of the school's coursework marks for a component, together with a report on the assessment of the coursework of the candidates	371.50	430.60	---	---
9	Report on the work of a group of candidates Note: The report is for the information of teachers only and does not involve any review of marking For the first five candidates: For each additional candidate up to maximum 15:	340.05 47.30	381.40 61.95	340.05 47.30	--- ---

Appeals against enquiries about exam results outcomes Stage 1 ..... 258.25

Appeals against enquiries about exam results outcomes Stage 2 ..... 309.60

## Fees for other Cambridge International services

### Return of Art

EURO (€)

Cambridge qualification	Per component	November 2022	March 2023	June 2023
<b>IGCSE 9-1</b>	0989/01	110.26	N/A	115.80
<b>IGCSE 9-1</b>	0989/02	110.26	N/A	115.80
<b>IGCSE</b>	0400/01	110.26	115.80	115.80
<b>IGCSE</b>	0400/02	110.26	115.80	115.80
<b>AS &amp; A Level</b>	9479/01	110.26	115.80	115.80
<b>AS &amp; A Level</b>	9479/02	110.26	115.80	115.80
<b>AS &amp; A Level</b>	9479/03	110.26	115.80	115.80
<b>O Level</b>	6090/01	110.26	N/A	115.80
<b>O Level</b>	6090/02	110.26	N/A	115.80
<b>O Level</b>	6090/03	110.26	N/A	N/A



The costs are based on items being returned by courier and on work being a maximum size of A2. We may charge additional postage if the maximum size is exceeded.

For more information and details of restrictions see 'Teacher Assessment – Form 5' available to download at [www.cambridgeinternational.org/forms](http://www.cambridgeinternational.org/forms)

**Fees are available on request for other Cambridge International services:**

- consultancy on curriculum, assessment design and school improvement
- publications
- merchandise.

## Refund of fees

We only refund fees if you let us know about the withdrawal of a candidate before the published entry closing date. We issue refunds after the end of the examination series. More information is in the *Cambridge Handbook* at [www.cambridgeinternational.org/examsOfficersguide](http://www.cambridgeinternational.org/examsOfficersguide)

If a school applying to become a Cambridge International school does not meet our standards, we will refund € 865.00 of the application fee (see page 2).

We cannot make any refunds or adjustments to your learner registration fees once you have submitted the data to us and the invoice have been issued.

## Taxation

Fees are net of local taxation. All fees are payable without deduction for any taxes; all sums payable to us shall be increased to the extent necessary to provide us with the same net amount we would have received if no such taxes had been applicable to those fees.

## Invoicing and payment

We email invoices to you – our invoices are in Euro (€).

To register your contact information, please contact us at [info@cambridgeinternational.org](mailto:info@cambridgeinternational.org)

## If you have any questions

Contact Cambridge International at [info@cambridgeinternational.org](mailto:info@cambridgeinternational.org).

For help, go to [www.cambridgeinternational.org/help](http://www.cambridgeinternational.org/help)

We are committed to making our documents accessible in accordance with the WCAG 2.1 Standard. We are always looking to improve the accessibility of our documents. If you find any problems or you think we are not meeting accessibility requirements, contact us at [info@cambridgeinternational.org](mailto:info@cambridgeinternational.org) with the subject heading: Digital accessibility. If you need this document in a different format, contact us and supply your name, email address and requirements and we will respond within 15 working days.